



UNIVERSITY OF
OREGON

School of Planning, Public
Policy and Management

Resource Assistance for Rural Environments



A RARE opportunity for professional growth
through service learning



Who We Are

Resource Assistance for Rural Environments (RARE) is a unique AmeriCorps Program serving rural Oregon to strengthen communities, economies, food systems, and the natural environment. Housed at the University of Oregon's Institute for Policy Research & Engagement in the School of Planning, Public Policy, and Management, we aim to link the energy, expertise, and innovation of the University of Oregon with rural Oregon communities' most pressing needs.

RARE AmeriCorps' mission is to assist Oregon's natural resource-tied rural communities while providing supported, applied experience to college graduates from across the US.

A RARE Experience

RARE members live in rural communities for 11 months and serve cities, counties, non-governmental organizations, or state agencies to improve economic and environmental conditions in rural Oregon. Now in its 26th year, the RARE AmeriCorps Program has placed over 550 volunteers and served every Oregon County. Placement focus areas include:

- ▶ City, County, and Regional Planning
- ▶ Travel & Tourism
- ▶ Food Systems
- ▶ Resilience Planning
- ▶ Community & Economic Development
- ▶ Main Street & Downtown Development
- ▶ Natural Resource Planning
- ▶ Renewable Energy Planning

Examples from the Field



Meet Josias Escobedo

Placed with **Travel Southern Oregon**, Josias is assisting with recruitment and coordination of the Culinary and Agritourism Studio hosted by Travel Oregon. He is also overseeing implementation of a food trail within the Rogue Valley.



Meet Sarah Birkle

Placed with the **City of Cornelius**, Sarah's main role is to help implement the foundations of the city's Urban Renewal Plan adopted earlier this year. She acts a liaison for small businesses and community members, coordinating a 'Pop-Up Plaza' and resource fair.



Meet Eleanor Williams

Placed with **Confederated Tribes of the Umatilla Indian Reservation**, Eleanor is working on a Food Systems Assessment focused on First Foods in collaboration with Yellowhawk Tribal Health Center and People of the Sacred Foods Group. She is also developing a feasibility report for a community kitchen on the reservation.

Applications Due April 24

Invited to Participate June 19

Interview Week July 13-17

RARE Orientation Sept. 9-11

Start in Community Sept. 14

Monthly Stipend \$1,750

Education Award \$6,195

Graduate Credits 9

Medical Insurance Yes!

Questions?

Email rare@uoregon.edu

Call (541) 346-2879

Visit <https://rare.uoregon.edu/>

Life After

Most RARE alumni enroll in graduate school or begin careers in public service. Alumni pursuing graduate work typically focus on planning, policy, public health, or community development. Alumni also go on to work in Oregon and beyond at organizations like Gorge Grown Food Network, OR Dept. of Environmental Quality, Rural Development Initiatives, Portland Development Commission, and city and county governments.



UNIVERSITY OF
OREGON

School of Planning, Public
Policy and Management

Institute for Policy
Research and Engagement

Pathways to RARE

Integrating PPPM studies with RARE service



Thinking about your career but not sure what's next?

Whether you're a student finishing up your postsecondary studies or a seasoned professional looking for new direction, consider creative ways to combine RARE with an education through the University of Oregon's School of Planning, Public Policy, and Management (PPPM). RARE and PPPM complement each other to strengthen your qualifications and amplify your impact. RARE is also a great way to experiment if you aren't sure what you want to study or where you want to work.

Here are four different paths RAREs and PPPM students typically follow.

► PPPM Undergraduate Degree – RARE

Put theory to practice and explore the field

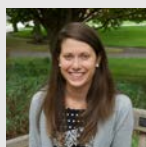


Meet Michael Walker

Michael graduated with a degree in PPPM and Business from UO. Looking to get more hands-on experience and put his skills to use, Michael served as the **City of Banks's Economic Development Coordinator**, where he marketed the amenities Banks has to offer in collaboration tourism groups, developed online infrastructure to support Banks's business community, and helped the City research urban renewal programs.

► PPPM Graduate Degree – RARE

Get your foot in the door to an impactful career

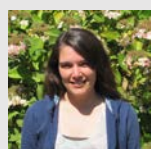


Meet Dana Nichols

During her graduate studies in Community and Regional Planning, Dana connected the Oregon Coast's economic development and resilience network. Continuing the relationships she built, Dana served as the **Greater Bandon Association's Main Street Coordinator** after graduation. RARE led Dana directly to a position as the City of Bandon's City Planner. Now, Dana works at the Oregon Cascades West Council of Governments in Albany.

► RARE – PPPM Graduate Degree

Gain residency & experience to maximize your degree



Meet Laura Stroud

Laura traveled from North Carolina to Oregon to join RARE and complete a community food assessment for **NeighborWorks Umpqua**. After her foray into food systems work, Laura completed an MCRP degree with a focus in environmental and natural resource planning. Laura then headed back to NC to work for a land conservancy and now serves as a planning consultant.

► RARE – PPPM Graduate Degree – RARE

Awaken and ground your passions, then test them out



Meet Titus, your RARE Program Director!

That's right, RARE's Director is a prime example of the service sandwich! Titus dipped his toes into community development serving with the **City of Winston**, grounded that experience with an MCRP degree, then took his talents to the **City of Creswell**. RARE helped awaken Titus to his true calling: while he still appreciates land use planning, he realized his true passion lies in volunteer empowerment.



UNIVERSITY OF
OREGON

School of Planning, Public
Policy and Management

Institute for Policy
Research and Engagement